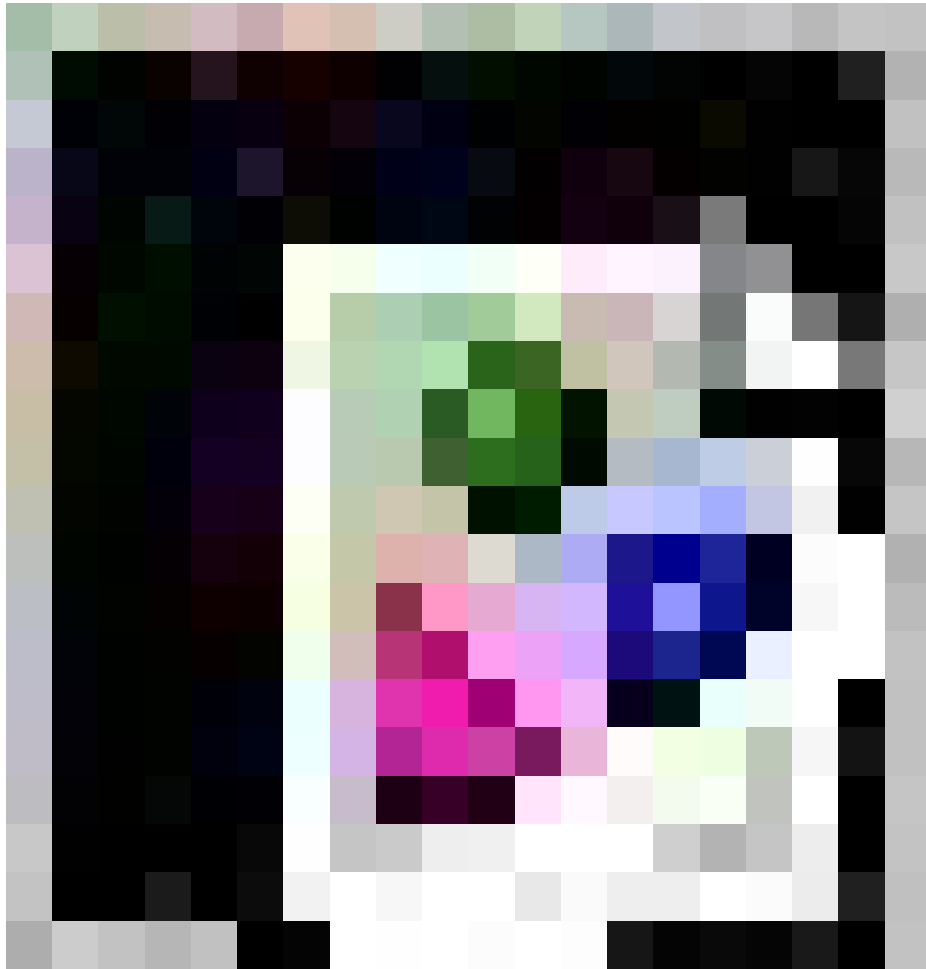


The Knockout Car

The Knockout car will knockout the competition

By: Emma Reid, Alexa Funahashi, Ben Drogin, Ashok Sundararaman

Our mission is to make the most efficient hybrid energy car for people to use.



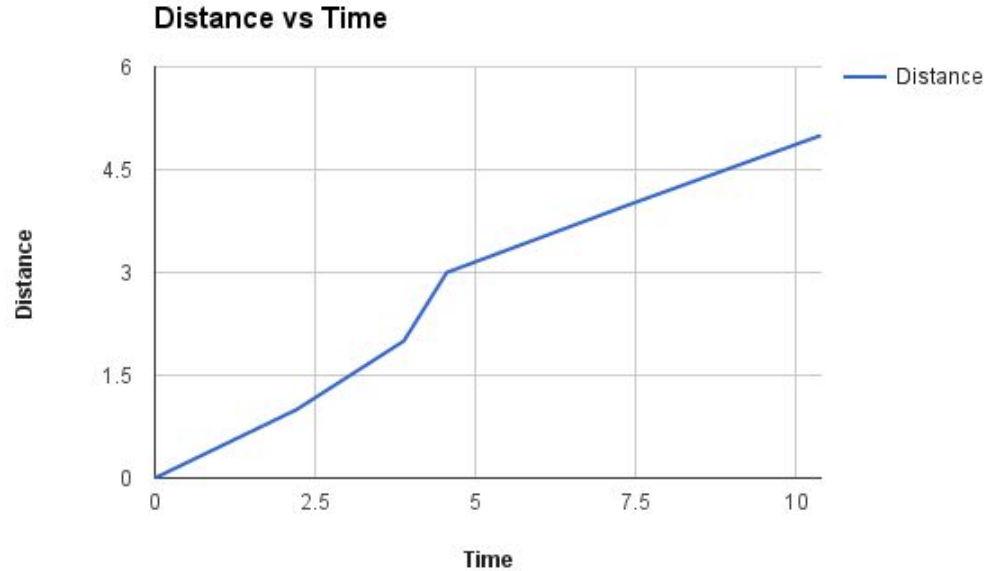
Our Car
In The
Wild

Advantages

- Our car is fast and gets you where you want to go in a straight line
- It is energy efficient and uses rubber band power which is cheap
- Can move at any distance up to 10m
- Can carry up to 500 grams
- Our car has a speed boost when the rubber band falls off
- It is perfect for off-roading because of our bendy wooden skewers(suspension)
- Our car is very cost efficient and will never let you

Speed

Distane	Time
0	0
1	2.21
2	3.88
3	4.55
4	7.42
5	10.38



High Quality Materials Used

3 Rubber Bands- \$0.02

8 CD's- \$1.76

1 Thin Red Oak Board- \$2.36

5 Screws- \$1.24

4 Brackets- \$0.10

18 Popsicle Sticks- \$0.90

4 Wooden Skewers- \$0.16

Duct tape- \$0.05

String- \$0.05

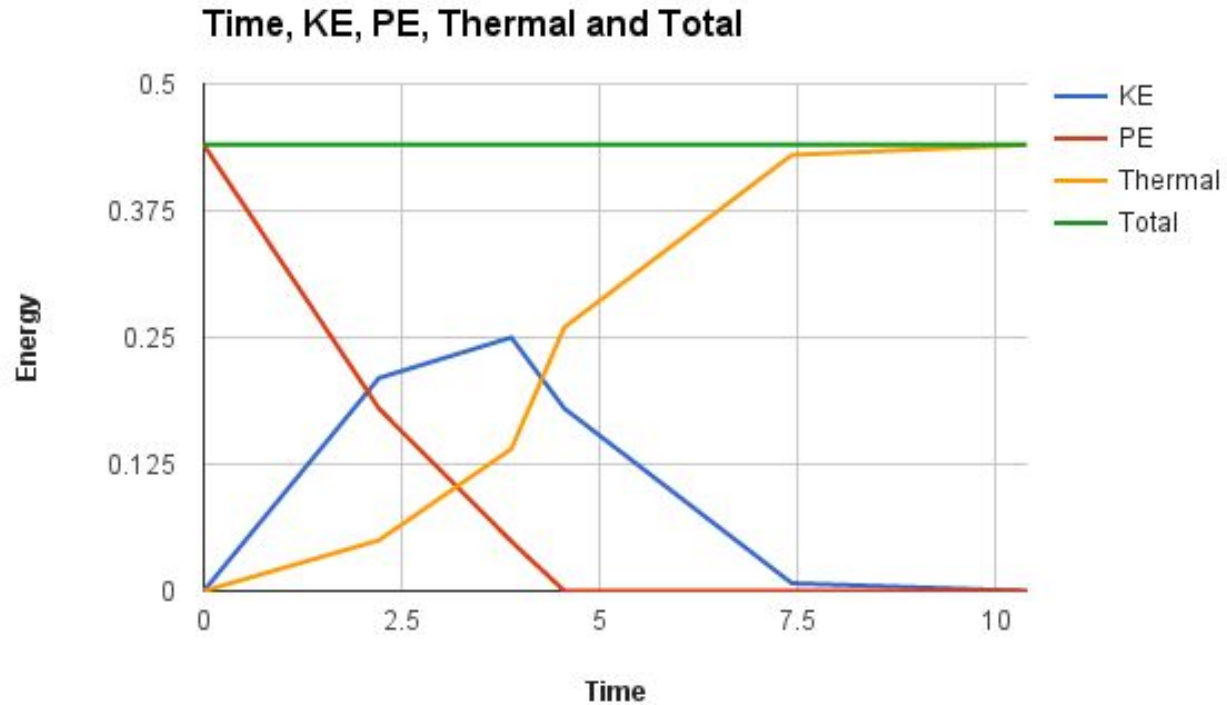
4 Small Wood Blocks- \$0.40

Grand Total- \$7.04

Energy Efficiency

Time	KE	PE	Thermal
0	0	0.44	0
2.21	0.21	0.18	0.05
3.88	0.25	0.049	0.14
4.55	0.18	0	0.26
7.42	0.0076	0	0.43
10.38	0	0	0.44

Energy Graph





And Welcome To The Knockout Family